



# MONTHLY MEMBERSHIP PROGRESS REPORT

District 24 A

Results as of: 5/31/2015

GMT: JERRY SMITH

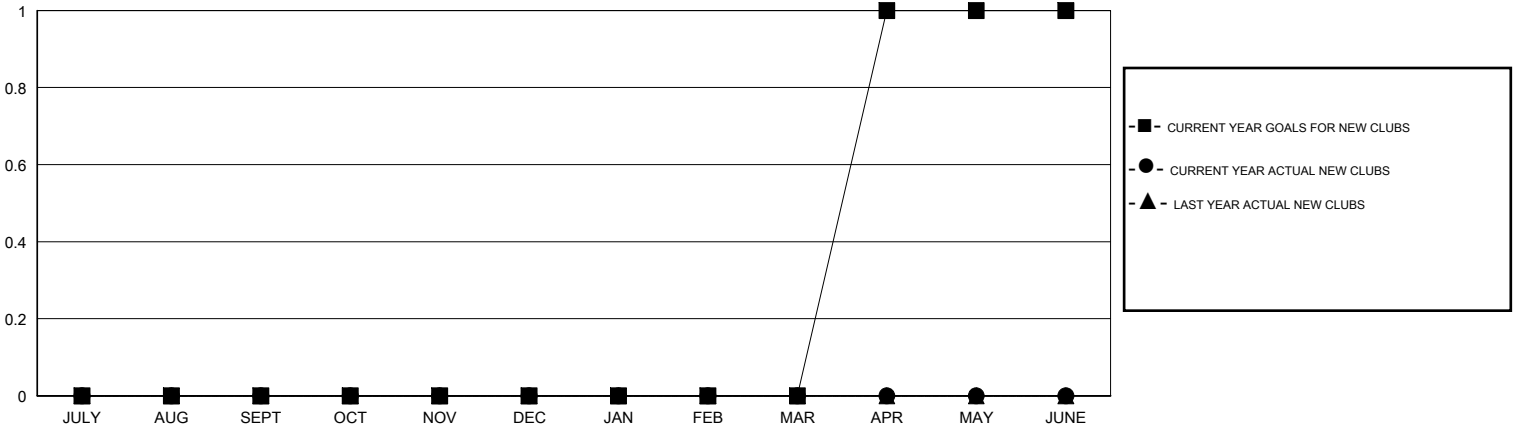
LOCATION VIRGINIA

GMT CA 1

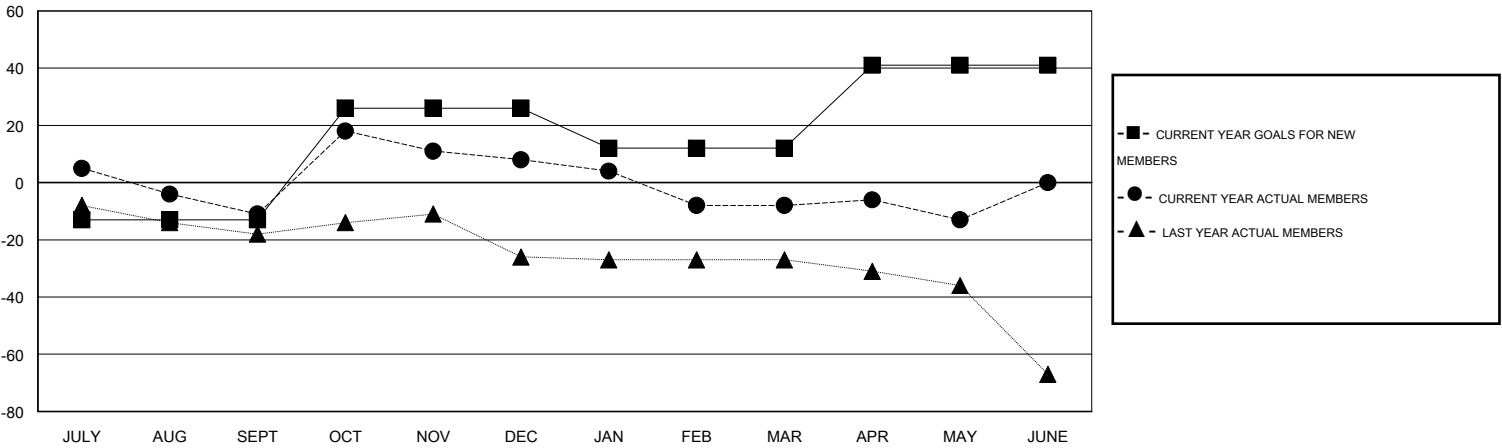
| Clubs                 |               |           |               |               |
|-----------------------|---------------|-----------|---------------|---------------|
| RESULTS FOR 2014-2015 |               |           |               |               |
| QUARTER               | NEW CLUB GOAL | NEW CLUBS | DROPPED CLUBS | NET GAIN/LOSS |
| JULY/AUG/SEPT         | 0             | 0         | 0             | 0             |
| OCT/NOV/DEC           | 0             | 0         | 0             | 0             |
| JAN/FEB/MAR           | 0             | 0         | 0             | 0             |
| APR/MAY/JUNE          | 1             | 0         | 0             | 0             |

| Members               |                 |                               |                 |               |
|-----------------------|-----------------|-------------------------------|-----------------|---------------|
| RESULTS FOR 2014-2015 |                 |                               |                 |               |
| QUARTER               | NEW MEMBER GOAL | CHARTER AND NEW MEMBERS ADDED | DROPPED MEMBERS | NET GAIN/LOSS |
| JULY/AUG/SEPT         | -13             | 31                            | 42              | -11           |
| OCT/NOV/DEC           | 39              | 44                            | 25              | 19            |
| JAN/FEB/MAR           | -14             | 45                            | 61              | -16           |
| APR/MAY/JUNE          | 29              | 25                            | 30              | -5            |

GOALS AND ACTUAL NEW CLUBS CUMULATIVE



GOALS AND ACTUAL MEMBERS CUMULATIVE



|                        |  |   |                |
|------------------------|--|---|----------------|
| DROPPED CLUBS: 0       | 42 CLUBS OF 60 ADDED 1 OR MORE NEW MEMBERS | <u>GENDER DISTRIBUTION</u>                            |                |
| <u>DROPPED MEMBERS</u> |  | MALE  | 1,071 (65.38%) |
| DECEASED               | 35   | FEMALE  | 567 (34.62%)   |
| CLUB CANCELLED         | 0  | <a href="#">CLICK HERE FOR HEALTH ASSESSMENT DATA</a> |                |
| OTHER                  | 123  | FAMILY UNIT MEMBERS                                   | 273            |
| TOTAL                  | 158  | HEAD OF HOUSEHOLD                                     | 132            |
|                        |  | NON-HEAD OF HOUSEHOLD                                 | 141            |